

ActiveGraf

Easy Install Guide v2.1

Installation and Add-ins activation



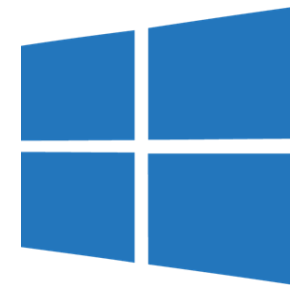
Table of Contents

System Requirements	3
Installing ActiveGraf	4
Upgrading ActiveGraf	5
Add-ins in Excel	6
License Activation	7
Quick Access in Excel	8
Add-ons in PowerPoint	9
Quick Access in PowerPoint	10



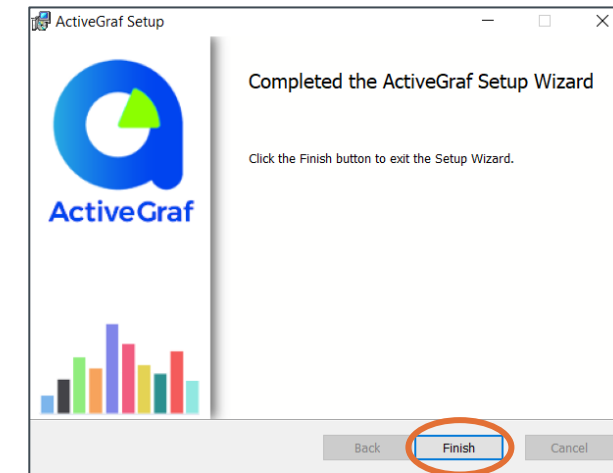
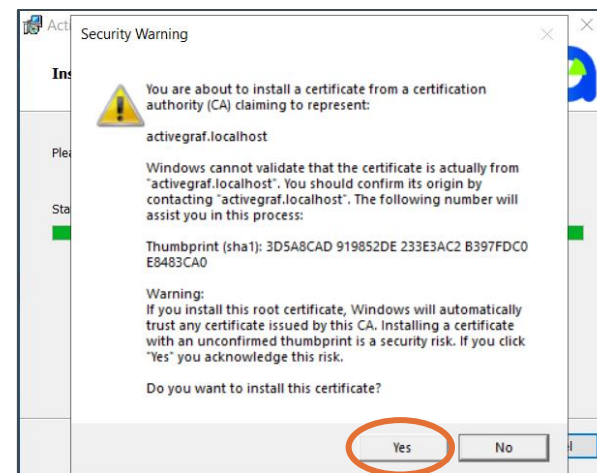
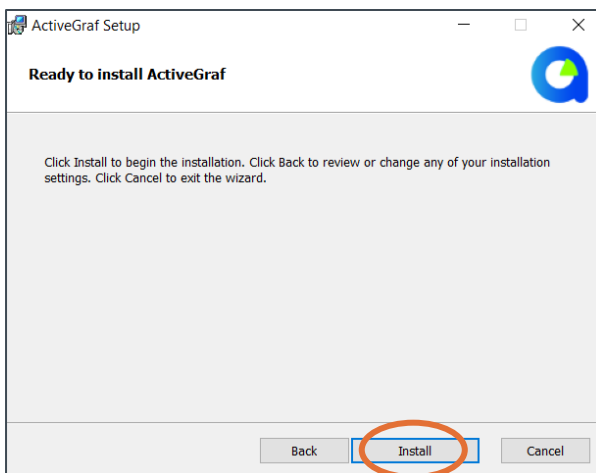
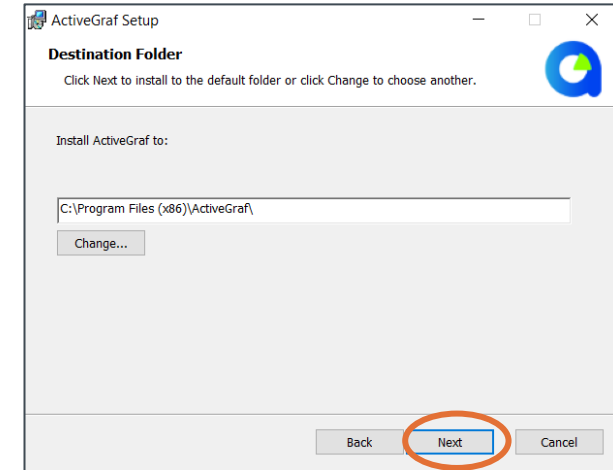
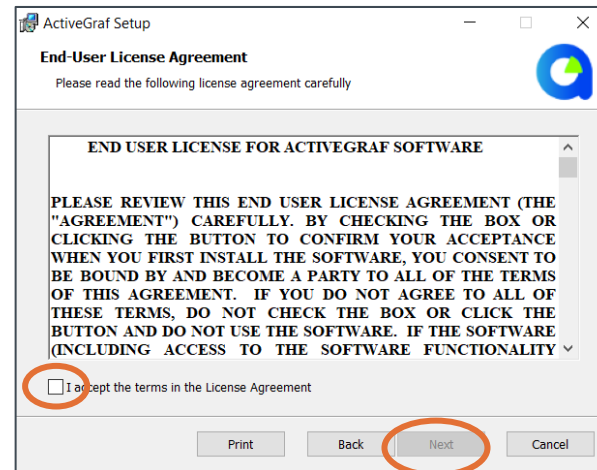
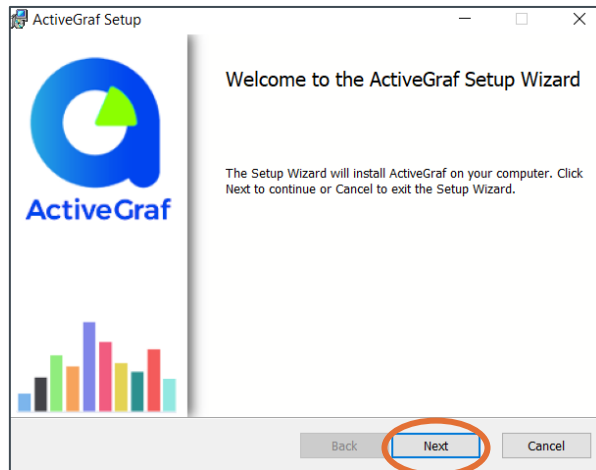
System Requirements

- ActiveGraf is an on-premise software application which runs in a single instance personal computer.
- Minimal Hardware requirements:
 - Microsoft Windows Compatible PC
 - Intel Core i7 processor or faster
 - 8 GB RAM or more
 - The ActiveGraf user experience have been specifically tailored to support gestures and direct screen interactions on capable HW devices.
- Software requirements:
 - Windows 8, Windows 10
 - Microsoft Office for Windows 2016 (version 1805 of above)
 - ActiveGraf requires full on-premise installation of Microsoft Office.
- ActiveGraf uses Office Add-in technology (Excel and PowerPoint add-ins)
- ActiveGraf Server runs on the local computer



Installing ActiveGraf – Follow these steps

Run the ActiveGraf .msi installer and follow the steps below:

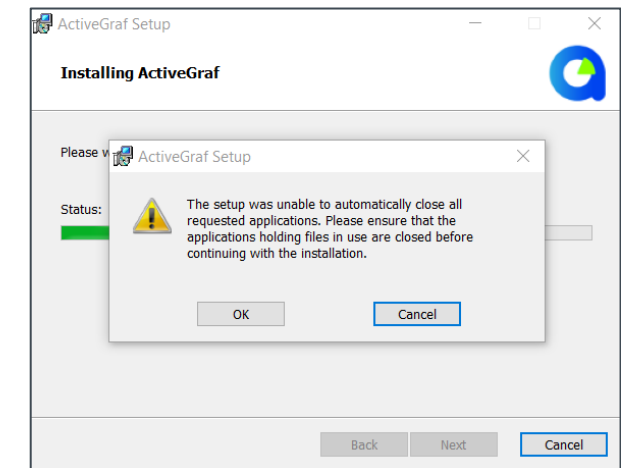
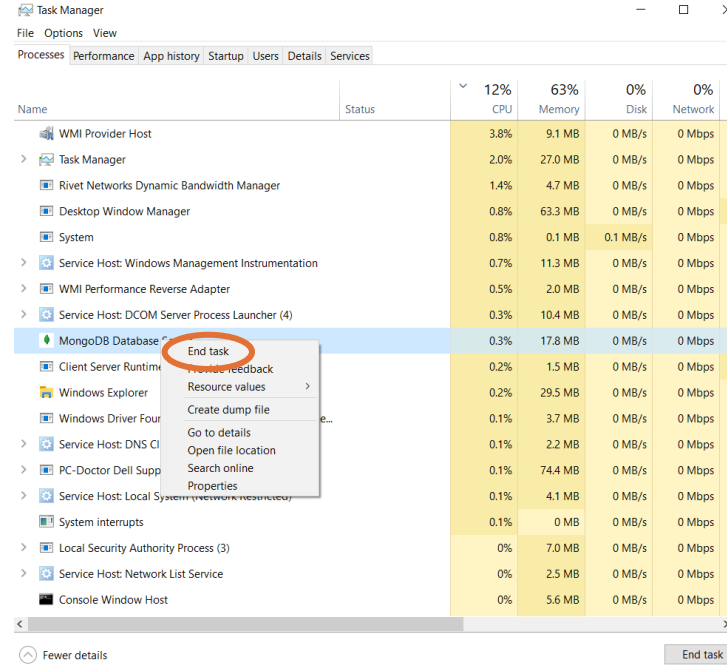
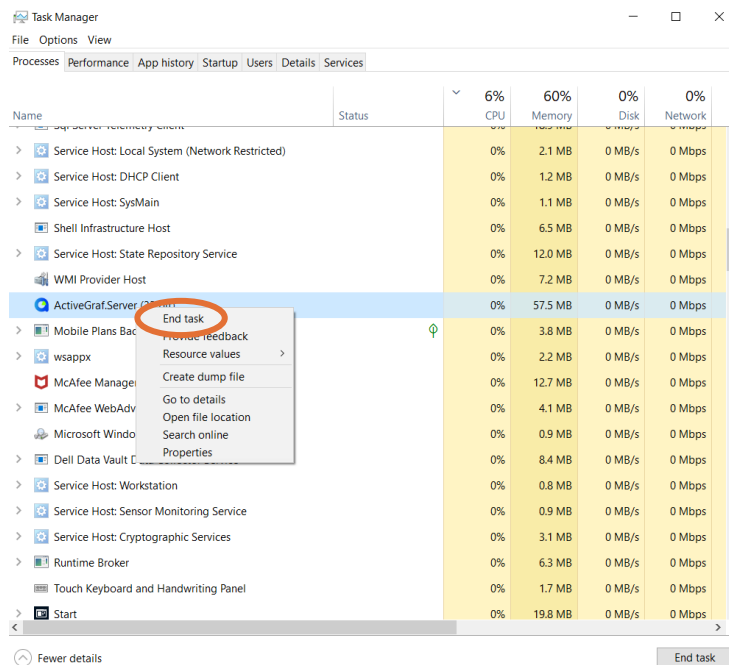


Upgrading ActiveGraf

If you would like to Upgrade ActiveGraf to a new version please follow these steps:

- Close all Office applications and Run the ActiveGraf .msi installer
- If Setup is not able to close the either ActiveGraf Server or Mongo DB please Open Task Manager and shut down ActiveGraf and MongoDB Servers (select task, right click and End task)
- Continue the installation process

If you don't follow these steps you will receive the message below and your installation will be unsuccessful. In this case you have to Uninstall ActiveGraf program from your computer and Install again with .msi file.



Installing ActiveGraf – Add-ins Excel

Once Installation is completed, ActiveGraf Add-ins require activation. Open and save a new Excel file on your **local drive** and load add-ins as follows.

Setting up ActiveGraf add-ins in Excel and PowerPoint

For both Excel and PowerPoint these steps below are to be performed

[Learn more about ActiveGraf](#)

Load add-ins in Excel and PowerPoint

1. Please close any open Office applications. The changes will take effect next time you restart.
2. In Excel/PowerPoint, select **My Add-ins** on the **Insert** tab of the ribbon.
3. Choose **SHARED FOLDER** at the top of the **Office Add-ins** dialog box.
4. Select **ActiveGraf** addin and click **OK** to add it to Excel/PowerPoint. Also repeat it for Insert Chart.

Thank you for using ActiveGraf.

Office Add-ins

MY ADD-INS | **SHARED FOLDER** | ADMIN MANAGED | STORE

1 ActiveGraf ActiveGraf

2 Insert Chart ActiveGraf

First select ActiveGraf and Add.
Open again this tab, select Insert Chart and Add.

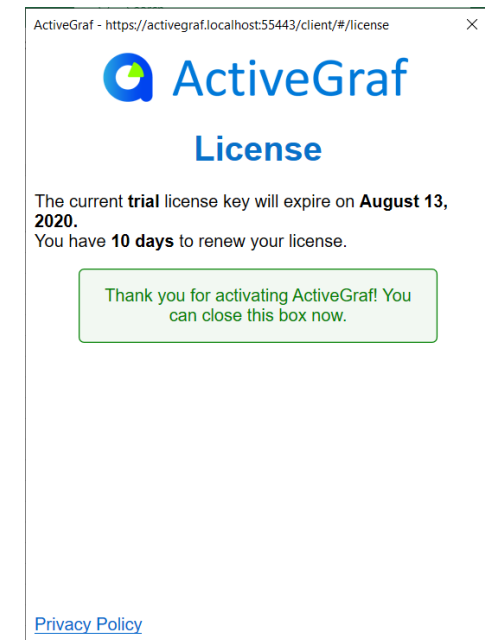
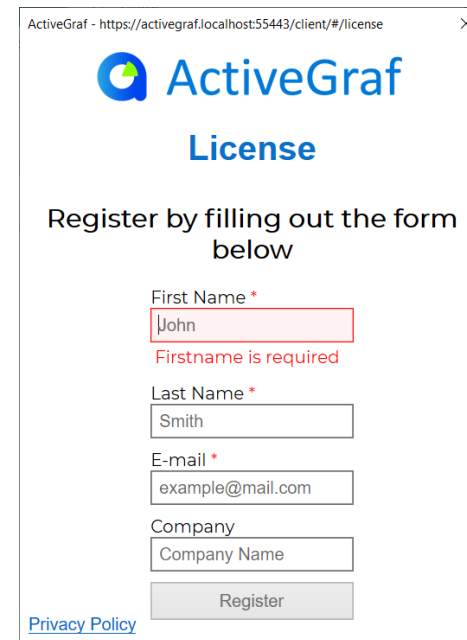
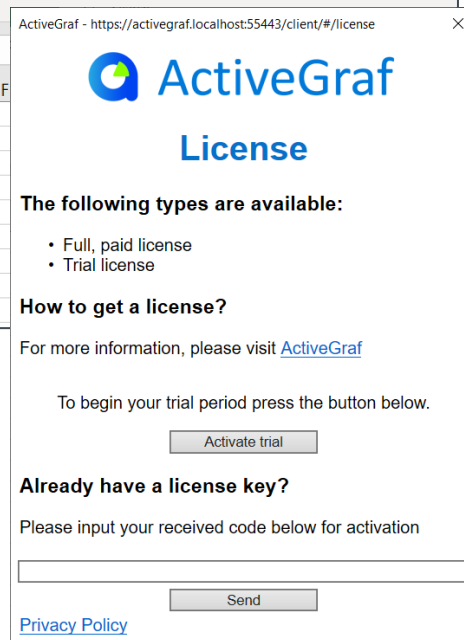
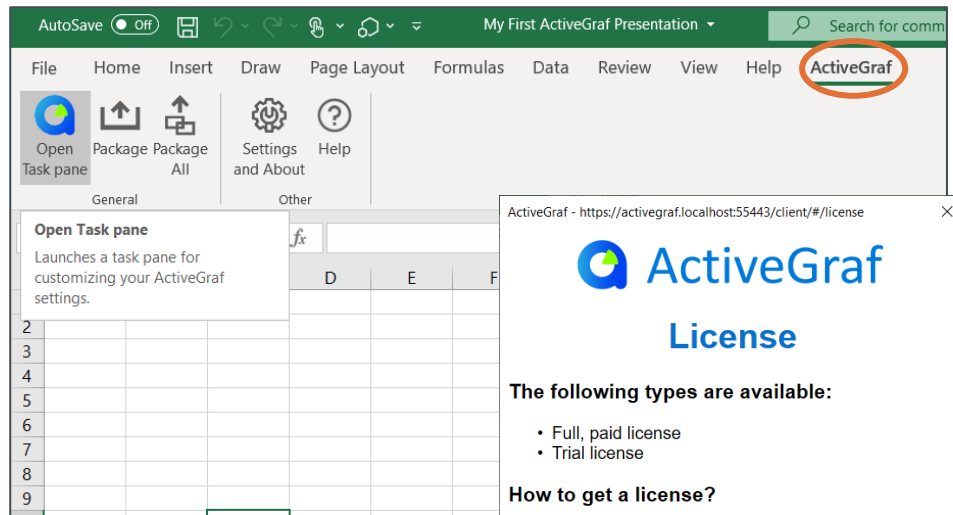
Add Close

Note: All ActiveGraf enabled files must be saved on a locally mapped drive, not OneDrive or other cloud drive, and should not be moved once created. You can share or move files with the "Package" function. More about this in the First Steps Guide.



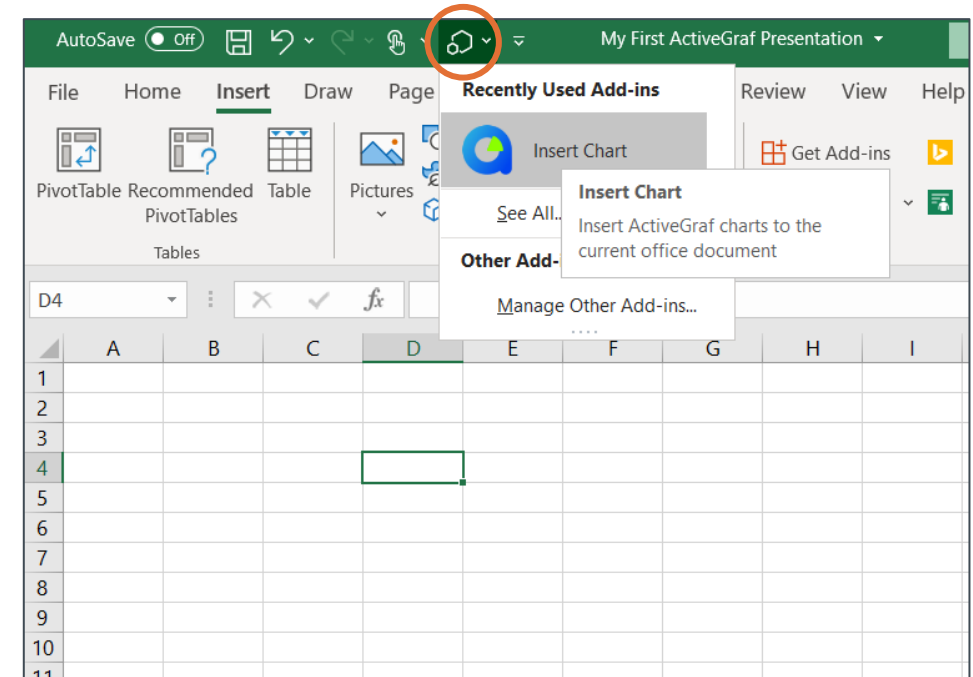
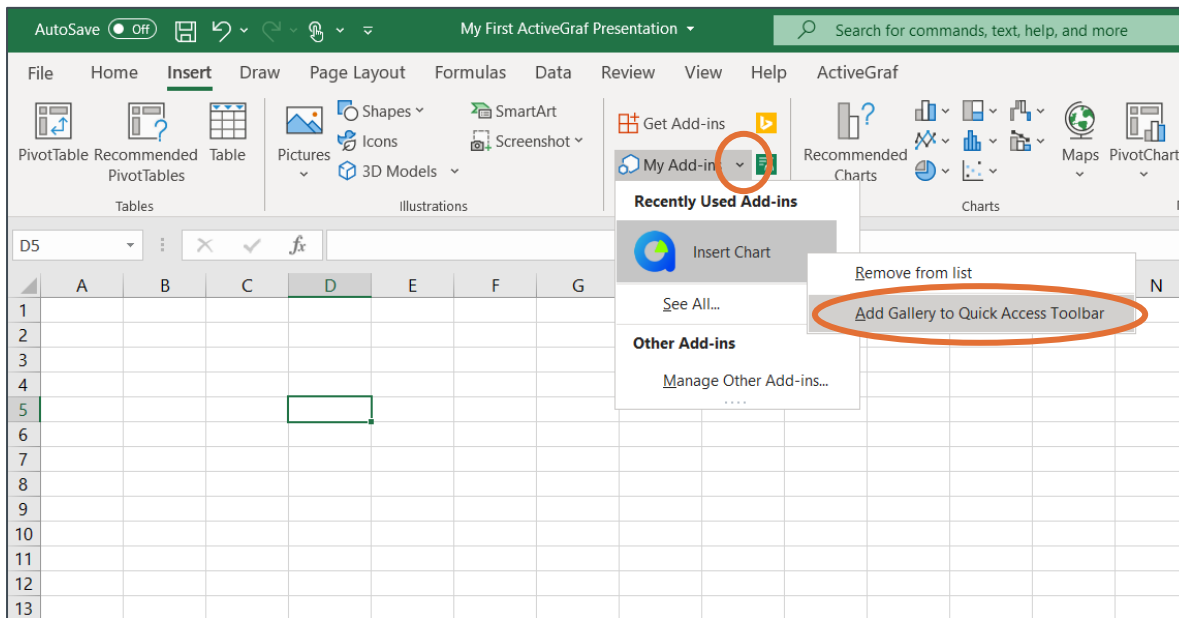
Installing ActiveGraf – License Activation

When you have opened the ActiveGraf Ribbon, open the TaskPane and activate your license.



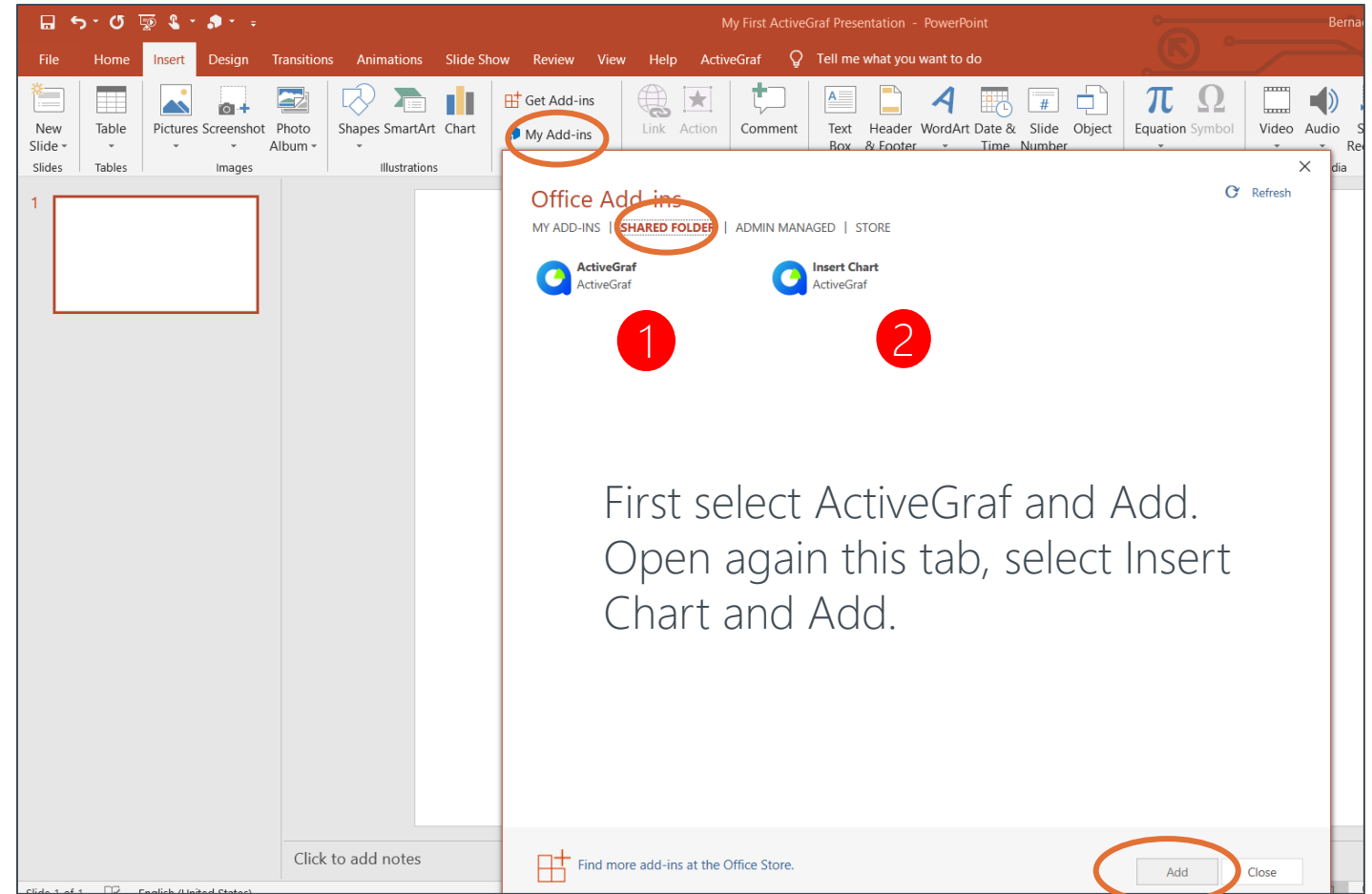
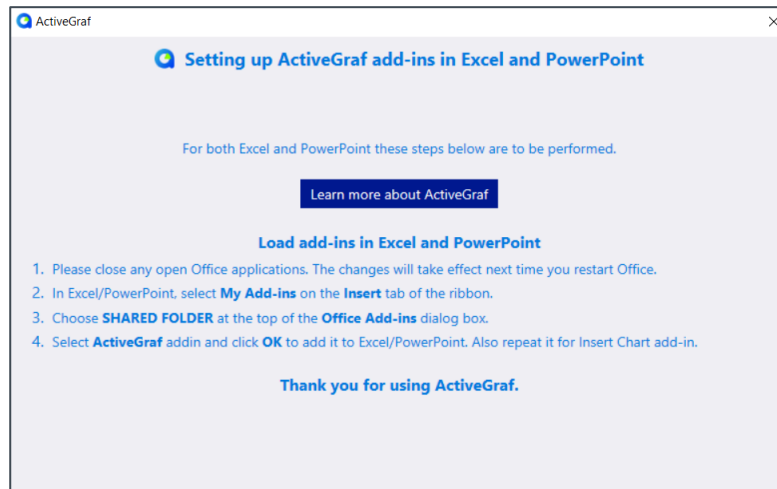
Installing ActiveGraf – Quick Access in Excel

The last step is to add ActiveGraf to Excel Quick Access Toolbar. Click on the little arrow of My Add-ins, then right click and add ActiveGraf to Quick Access Toolbar. This makes it easier and quicker to insert ActiveGraf into your dashboards and spreadsheets.



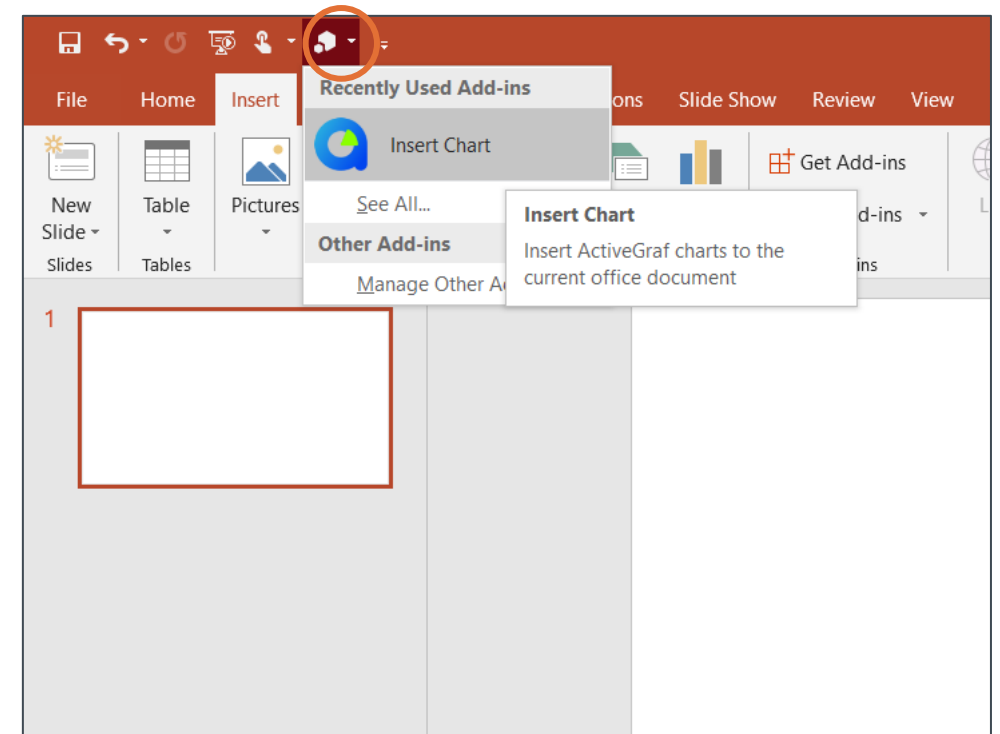
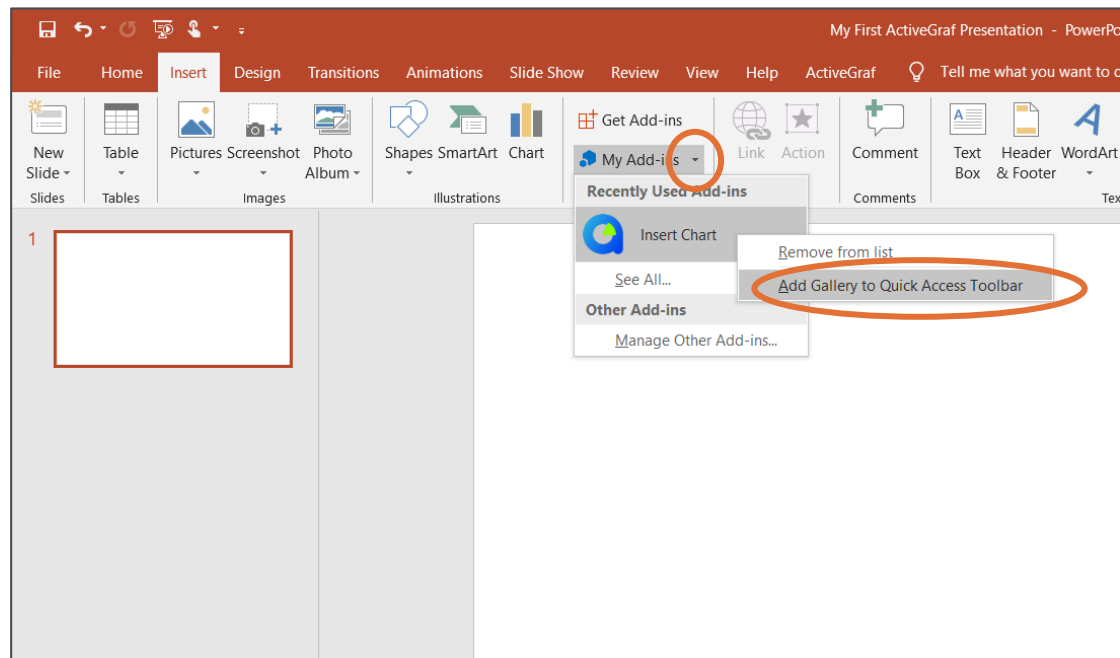
Installing ActiveGraf – Add-ins Power Point

Now, let's do the same steps in Power Point. Open and save a new Power Point presentation on your local drive (again make sure that this file and all ActiveGraf enabled files are on a locally mapped drive, not a cloud drive). Add a new slide and load add-in.



Installing ActiveGraf – Quick Access in PowerPoint

Now add ActiveGraf to Power Point Quick Access Toolbar. Click on the little arrow of My Add-ins, then right click and add ActiveGraf to Quick Access Toolbar. This makes it easier and quicker to insert ActiveGraf into your dashboards and presentations.



Congratulations! You have successfully installed ActiveGraf.

As a next step, we suggest to continue with the First Steps Guide and effortlessly create your first interactive scenario dashboard.